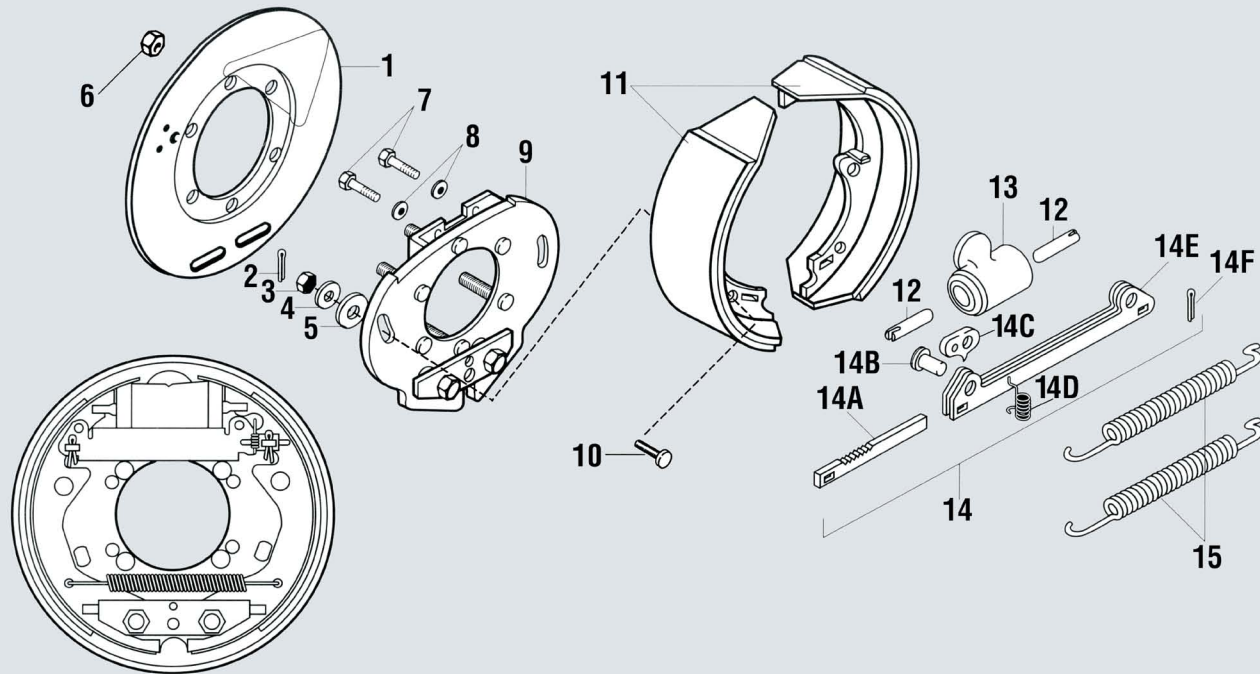


Service Replacement Parts

12" x 3 3/8" Hydraulic Brake T-80, D-80 and H-80



Parts List

No.	Brake Part Description	AL-KO Part No.	Hayes Part No.	No.	Brake Part Description	AL-KO Part No.	Hayes Part No.
0	LH or RH Brake Assembly	568004	60206803	11	Shoe & Lining Kit	K363925	K363925
1	Dust Cover	568289.3	—	12	Push Rod (Wheel Cylinder)	568228	09550003
1	Dust Cover	—	09694612	13	Cylinder-Wheel	568296	09550002
2	Shoe Hold Down Cotter Pin	568224	09190501	14	Self-Adjuster Assembly	568259	60273001
3	Shoe Hold Down Nut	568233	090647	14A	Rack	—	—
4	Shoe Hold Down Belleville Washer	568225	568225	14B	Clevis Pin 3/8" x 3/4"	—	—
5	Shoe Hold Down Washer	568232	090541	14C	Pawl	—	—
6	Brake Attaching Nut 1/2" - 20	568022	090617	14D	Spring-Pawl	—	—
7	Bolt 3/8" - 16 x 3/4"	568231	090718	14E	Sleeve Assembly	—	—
8	Lock Washer 3/8"	363334	090532	14F	Cotter Pin 5/32" x 3/4"	—	—
9	Backing Plate Assembly	—	—	15	Shoe Retract Spring	568226	09652912
10	Shoe Hold Down Bolt	568227	090759	16	Connector-Brake Line, (not shown)	568230	09344501

WARNING: AL-KO Kober Corporation manufacture hubs and drums that are compatible with many wheels used in the trailer industry that have matching bolt patterns. AL-KO does not manufacture wheels, nor do they recommend a specific wheel for compatibility with the hubs and drums they manufacture. The wheel manufacturer should be contacted for proof of compatibility before use.

8,000 lb.